

Canadas #1 Professional Brand
FEATHERLITE
FULL LINE CATALOG



FEATHERLITELADDERS.COM

HOW TO SELECT A LADDER

A GUIDE

1 Select a Type



STEP LADDER

The most popular style of ladder. Used from medium to low heights. Utilize pail shelves and tops to hold tools for the job.



SPECIALTY LADDER

Multi purpose ladder for use in many scenarios, as a step or extension ladder on multiple surfaces.



EXTENSION LADDER

The most versatile style of ladder, found in a variety of sizes. Most commonly used for higher elevations.

2 Select a Height

STEP LADDERS		
LADDER SIZE	APPROX. HIGHEST STANDING LEVEL	MAXIMUM REACH*
4'	1' 11"	8' 6"
5'	2' 10"	9' 5"
6'	3' 9"	10' 4"
7'	4' 9"	11' 4"
8'	5' 8"	12' 3"
10'	7' 7"	14' 2"
12'	9' 6"	16' 1"
14'	11' 5"	18'
16'	13' 4"	19' 11"
18'	15' 3"	21' 10"
20'	17' 2"	23' 9"

EXTENSION LADDERS				
LADDER SIZE	MAXIMUM EXTENDED LENGTH	MAX. REACH*	WORKING RANGE TO TOP SUPPORT*	MAXIMUM ACCESSIBLE ROOF HEIGHT*
16'	13'	15' 11"	7 1/2' - 12 1/2'	4 1/2' - 9 1/2'
20'	17'	19' 1"	9 1/2' - 16 1/2'	6 1/2' - 13 1/2'
24'	21'	23' 8"	11 1/2' - 20'	8 1/2' - 17'
28'	25'	27' 7"	13 1/2' - 24'	10 1/2' - 21'
32'	29'	31' 5"	15 1/2' - 28'	12 1/2' - 25'
36'	32'	34' 4"	17 1/2' - 31'	14' - 28'
40'	35'	37' 3"	19' - 33 1/2'	16' - 30 1/2'
44'	39'	41' 1"	21' - 37 1/2'	18' - 34 1/2'
48'	43'	45'	23' - 41 1/2'	20' - 38 1/2'
60'(1)	48'	49' 10"	23' - 46 1/2'	20' - 43 1/2'

*Assumes 5' 7" person with 12" vertical reach | *When set up at the proper 75 1/2° angle | **Three-section extension ladder

3 Select a Load Capacity

SUPER HEAVY DUTY 375 LB TYPE 1AA	EXTRA HEAVY DUTY 300 LB TYPE 1A	HEAVY DUTY 250 LB TYPE 1	MEDIUM DUTY 225 LB TYPE 2	LIGHT DUTY 200 LB TYPE 3
TYPE 1AA: Professional use. Extra heavy duty. Capable of supporting 375 lbs. USES: MRO and industrial construction.	TYPE 1A: Professional use. Extra heavy duty. Capable of supporting 300 lbs. USES: Roofing, building maintenance, contracting and industrial construction.	TYPE 1: Industrial use. Heavy duty. Capable of supporting 250 lbs. USES: Building maintenance, general contracting and sheet rock.	TYPE 2: Commercial use. Medium duty. Capable of supporting 225 lbs. USES: Light commercial and general repair, painting and cleaning.	TYPE 3: Household use. Light duty. Capable of supporting 200 lbs. USES: Light cleaning and painting.

4 Select a Ladder Material



DO **NOT** USE
ALUMINUM LADDERS
NEAR ELECTRICITY

ALUMINUM

- › Lightweight
- › Long-lasting construction
- › Resists corrosion
- › Ideal for painting, roofing and siding



FIBERGLASS LADDERS
ARE **REQUIRED** FOR
WORKING AROUND
ELECTRICITY


FIBERGLASS

- › Non-conductive when clean and dry
- › Strong and durable
- › Weather-resistant
- › Great for heavy-duty construction

AT FEATHERLITE, all of our products are designed and constructed to meet or exceed applicable standards and requirements of Canadian Standards Association (CSA), and the American National Standards Institute (ANSI). Please read the information on this page before using our products. Your safety is important to us.

HOW TO SAFELY USE OUR LADDERS

Louisville Ladder Corp. manufacturers products in compliance with the applicable **CANADIAN NATIONAL STANDARDS (CSA)** and American National Standards Institute (ANSI), safety codes.

CSA is a developer of safety standards and a provider of product testing and certification services for portable ladders. The CSA certification mark  indicates the ladder has been tested and certified in conformity with the Z11-18 Portable Ladder standard. Certification is an ongoing process that involves follow up factory inspections and testing. Ladders displaying the CSA Certification mark provides our customers increased assurance of product quality and safety.

ANSI is a developer of safety standards for a wide variety of consumer and industrial products. Listed below are the individual ANSI ladder standards based on material or type of climbing product.

SCAFFOLDS, PLANKS AND STAGES: **ANSI A10.8**

WOOD LADDERS: **ANSI A14.1**

ACCESSORIES: **ANSI A14.8**

METAL LADDERS: **ANSI A14.2**

FIBERGLASS LADDERS: **ANSI A14.5**

STEEL LADDERS: **ANSI A14.7**

ATTIC LADDERS: **ANSI A14.9**

Both CSA and ANSI have established a Duty Rating which identifies the use for which a portable ladder is intended and the conditions under which the ladder can be used safely. An extensive series of tests and design requirements determines which Duty Rating label a ladder may receive. The total load supported includes the combined weight of the user, clothing, tools and any materials on the ladder. However, ladders must be used properly to support the intended load. See section "Select a Load Capacity" on previous page for more information on CSA and ANSI Duty Ratings.



ANSI

Meets or exceeds requirements
of American National Standards Institute

SAFETY IS EVERYONE'S RESPONSIBILITY. Even a rigidly constructed ladder can be involved in an accident if the proper cautions are not taken in its use. Critical factors in safe use include reading all instructions and labels accompanying the ladder.



DANGER: Metal ladders conduct electricity; do not use where contact may be made with live electrical circuits. Failure to read and follow instructions on the use of this product could result in serious personal injury or death.

PROPER SELECTION

Select ladder of proper duty rating to support combined weight of user and materials. Ladders are available with duty ratings of 200, 225, 250, 300 and 375 lbs. Select ladder of proper length to safely reach desired height.

INSPECTION BEFORE EACH USE

- Inspect thoroughly for missing or damaged components. Never use a damaged ladder and never make temporary repairs.
- Inspect thoroughly for loose fasteners. Make sure all working parts are in good working order (lubricate if necessary).
- Clean ladder of all foreign material (wet paint, mud, snow, grease, oil, etc).
- Destroy ladder if damaged, worn, or exposed to fire or chemicals

CONSIDER BEFORE EACH USE

- Metal ladders conduct electricity. Keep away from electrical circuits.
- Consult manufacturer for use in chemical or other corrosive environments.
- Use ladder only as outlined in instructions. Ladders are designed for one person only unless otherwise noted (i.e. twin front ladders). Do not overload.
- Do not use in high winds or during storm
- Do not use if in poor health, if taking any drugs or alcoholic beverages, or if physically handicapped
- Keep shoes clean. Leather soles should not be worn.
- Never leave ladder set up and unattended
- Pay close attention to what you are doing

STEP LADDERS – PROPER SETUP AND USE

- Use help in setting up ladder, if possible
- Make sure ladder is fully open and spreaders locked
- Set all feet on firm, level surface. Do not place on unstable, loose or slippery surfaces. Place ladder where access is not obstructed. Do not place in front of unlocked doors. Ladders are not intended to be used on scaffolds.
- Secure ladder, where possible, from excessive movement

- Make sure spreaders are locked and ladder is stable before climbing
- Climb only front side of ladder. Face ladder when climbing up or down. Maintain a firm grip. Use both hands in climbing.
- Keep body centered between side rails. Do not overreach. Get down and move ladder as needed.
- Do not climb, stand, or sit above second step from top. Do not climb, stand, or sit on spreader braces, ladder top, or pail shelf.
- Do not straddle front and back. Do not climb from one ladder onto another.
- Avoid pushing or pulling off to side of ladder. Do not "walk" or "shift" ladder while on it.

For additional information see ANSI A14.1–Wood; A14.2–Aluminum; A14.5–Fiberglass. Twin front (mechanic) ladders and extension trestle ladders may be climbed from either side.

SINGLE & EXTENSION LADDERS – PROPER SETUP AND USE

- Use help in setting up ladder, if possible
- Set base of ladder on firm, level surface. Ladder leveling devices are available for use on uneven ground. Place ladder where access is not obstructed.
- Do not place on unstable, loose, or slippery surfaces. Do not place in front of unlocked doors. Ladders are not intended to be used on scaffolds.
- Secure base section before raising ladder to upright position. Do not raise or lower with fly section extended.
- Extend fly section and engage rungllocks. Make sure rope does not create a tripping hazard or interfere with activity near ladder.
- Recommend tying bottom fly rung to adjacent base rung
- Extend and retract fly section only from ground and when no one is on ladder.
- Do not overextend. A minimum overlap of sections is required as follows:
 - ladder size up to and including 32'–3' overlap
 - over 32' up to and including 36'–4' overlap
 - over 36' up to and including 48'–5' overlap
 - sizes over 48'–6' overlap

- Position ladder against upper support surface. Make sure ladder does not lean to side. Ladder must make a 75 1/2° angle with the ground.
- To establish if ladder is at proper angle – Determine the distance along the rail between the top and bottom support points of the ladder. Divide this distance by 4. The result will be the horizontal distance between the top and bottom support points.
- When using ladder for access to roof, extend top 3 feet above roof edge. Tie or secure top from movement.
- Make sure top and bottom ends of ladder are firmly supported
- Check that top and bottom of ladder are properly supported. Make sure rungllocks are engaged before climbing.
- Face ladder when climbing up or down. Maintain a firm grip.
- Use both hands in climbing
- Keep body centered between side rails. Do not overreach. Get down and move ladder as needed.
- Do not climb above top support point. Do not climb from one ladder to another.
- Do not straddle or sit on rungs
- Avoid pushing or pulling off to side of ladder. Do not "walk" or "shift" ladder while on it.

PROPER CARE AND STORAGE

- Hang ladder on racks at intervals of 6' for support
- Never store materials on ladder
- Never drop or apply an impact load to ladder
- Securely support ladder in transit
- Never paint a wood ladder. Treat with wood preservative.
- Protect wood ladder from exposure to the elements, but allow good ventilation. Keep away from heat and moisture.

FEATHERLITE

TABLE OF CONTENTS

FIBERGLASS STEP

6800-AA / 6600-AA / 6400

1

6600 / 6900 / 6300

2

5800

3

FIBERGLASS PLATFORM

6500-AA / 6500

3

FIBERGLASS PLATFORM EXTRA WIDE

7500XW / 6500XW

4

FIBERGLASS STRAIGHT

6100/5600/5600D/5300

5

FIBERGLASS EXTENSION

9200D / 6200 / 6200D / 5700 / 5700D

6

6900 / 6300 / 5800

7

ALUMINUM STEP

3400 / 2400 / 3600

8

ALUMINUM PLATFORM EXTRA WIDE

3500 / 3500XW

9

SAWHORSE

3700

9

ALUMINUM STRAIGHT

4100 / 3100D

10

ALUMINUM EXTENSION

4200D / 3200D / 2200

11

SPECIALTY

JLT / 2700

12

FXS6900

13

ACCESSORIES

14

LOCATIONS

15

FEATHERLITE

FIBERGLASS STEP

SUPER HEAVY DUTY
375
LB
TYPE 1AA



Wrap Around Rail



Heavy Duty Gusset



Heavy Duty Boot



MODEL	LADDER SIZE	OPEN HEIGHT	HIGHEST STANDING LEVEL	BASE WIDTH	BASE DEPTH	APPROX. WEIGHT LBS	MAX. REACH
6804-AA	4'	45 4/7"	23"	21 1/4"	29 7/8"	15	8' 6"
6805-AA	5'	57"	34"	22 3/4"	35 4/5"	19	9' 5"
6806-AA	6'	68 4/9"	46"	24 1/4"	41 4/5"	22	10' 5"
6807-AA	7'	79 4/5"	57"	25 3/4"	47 3/4"	26	11' 4"
6808-AA	8'	91 1/4"	68"	27 1/4"	53 4/9"	31	12' 3"
6810-AA	10'	114"	91"	30 1/4"	65 1/5"	42	14' 2"
6812-AA	12'	136 7/8"	114"	33 1/4"	77 1/5"	52	16' 1"

SUPER HEAVY DUTY
375
LB
TYPE 1AA



TWIN STEP LADDER

Metal Top



Wrap Around Rail



Heavy Duty Boot



MODEL	LADDER SIZE	OPEN HEIGHT	HIGHEST STANDING LEVEL	BASE WIDTH	BASE DEPTH	APPROX. WEIGHT LBS	MAX. REACH
6604-AA	4'	45 1/4"	1' 11"	21 1/4"	37 7/8"	22	8' 6"
6605-AA	5'	56 11/16"	2' 10"	22 3/4"	45 1/4"	26	9' 5"
6606-AA	6'	68 1/8"	3' 10"	24 1/4"	52 3/4"	31	10' 5"
6607-AA	7'	79 1/2"	4' 9"	25 3/4"	60 1/8"	35	11' 4"
6608-AA	8'	90 15/16"	5' 8"	27 1/4"	67 1/2"	41	12' 3"
6610-AA	10'	113 3/4"	7' 7"	30 1/4"	82 3/8"	60	14' 2"
6612-AA	12'	136 9/16"	9' 6"	33 1/4"	97 1/4"	73	16' 1"

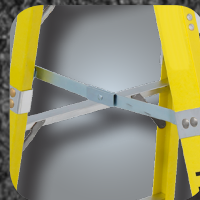
EXTRA HEAVY DUTY
300
LB
TYPE 1A



Top with Tool Slots



Wrap Around Rail



Heavy Duty Boot



MODEL	LADDER SIZE	OPEN HEIGHT	HIGHEST STANDING LEVEL	BASE WIDTH	BASE DEPTH	APPROX. WEIGHT LBS	MAX. REACH
*6402	2'	24"	1' 10"	17"	18 1/8"	10	8' 5"
*6403	3'	32"	2' 6"	18 1/4"	24 1/4"	13	9' 1"
6404	4'	45 4/7"	1' 11"	21 1/4"	29 7/8"	14	8' 6"
6405	5'	57"	2' 10"	22 3/4"	35 4/5"	18	9' 5"
6406	6'	68 4/9"	3' 10"	24 1/4"	41 4/5"	21	10' 5"
6407	7'	79 4/5"	4' 9"	25 3/4"	47 3/4"	26	11' 4"
6408	8'	91 1/4"	5' 8"	27 1/4"	53 4/9"	28	12' 3"
6410	10'	114 1/16"	7' 7"	30 1/4"	65 1/5"	40	14' 2"
6412	12'	136 7/8"	9' 6"	33 1/4"	77 1/5"	50	16' 1"

*6402 and 6403 are step stools



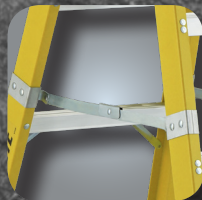
FEATHERLITE 1

FIBERGLASS STEP

Aluminum Top



Wrap Around Rail



Heavy Duty Boot



AVAILABLE IN USA

MODEL	LADDER SIZE	OPEN HEIGHT	HIGHEST STANDING LEVEL	BASE WIDTH	BASE DEPTH	APPROX. WEIGHT LBS	MAX. REACH
6603	3'	33 7/8"	1' 0"	18 1/4"	30 1/2"	17	7' 7"
6604	4'	45 1/4"	1' 11"	21 1/4"	37 7/8"	21	8' 6"
6605	5'	56 5/8"	2' 10"	22 3/4"	45 1/4"	25	9' 5"
6606	6'	68 1/8"	3' 10"	24 1/4"	52 3/4"	29	10' 5"
6607	7'	79 1/2"	4' 9"	25 3/4"	60 1/8"	33	11' 4"
6608	8'	90 7/8"	5' 8"	27 1/4"	67 1/2"	38	12' 3"
6610	10'	113 3/4"	7' 7"	30 1/4"	82 3/8"	56	14' 2"
6612	12'	136 9/16"	9' 6"	33 1/4"	97 2/8"	67	16' 1"
*6614	14'	168"	11' 5"	34 1/2"	113 3/8"	80	18"
*6616	16'	192"	13' 4"	37 3/8"	129"	87	19' 11"

*6614 and 6616 not available in the US. Both have orange fiberglass rails

EXTRA HEAVY DUTY
300
LB
TYPE 1A

TWIN STEP LADDER



Pro Top™



Inside Spreader Brace



Heavy Duty Boot



MODEL	LADDER SIZE	OPEN HEIGHT	HIGHEST STANDING LEVEL	BASE WIDTH	BASE DEPTH	APPROX. WEIGHT LBS	MAX. REACH
*6903	3'	32"	2' 6"	18 1/4"	24 1/4"	13	9' 1"
6904	4'	45 4/7"	1' 11"	21 1/4"	29 3/8"	14	8' 6"
6905	5'	57"	2' 10"	22 3/4"	35 4/5"	18	9' 5"
6906	6'	68 4/9"	3' 10"	24 1/4"	41 4/5"	21	10' 5"
6907	7'	79 4/5"	4' 9"	25 3/4"	47 3/4"	26	11' 4"
6908	8'	91 1/4"	5' 8"	27 1/4"	53 4/9"	28	12' 3"
6910	10'	114"	7' 7"	30 1/4"	65 1/8"	40	14' 2"
6912	12'	136 7/8"	9' 6"	33 1/4"	77 1/8"	50	16' 1"

*6903 is a step stool

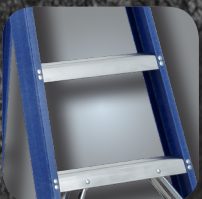
EXTRA HEAVY DUTY
300
LB
TYPE 1A



Molded Top



Slip Resistant Tread



Slip Resistant Shoe



AVAILABLE IN USA

MODEL	LADDER SIZE	OPEN HEIGHT	HIGHEST STANDING LEVEL	BASE WIDTH	BASE DEPTH	APPROX. WEIGHT LBS	MAX. REACH
6304	4'	45 10/16"	1' 11"	18 3/4"	28 5/8"	12	8' 6"
6305	5'	57"	2' 10"	20 1/8"	34 1/2"	15	9' 5"
6306	6'	68 1/2"	3' 10"	21 7/8"	40 3/8"	17	10' 5"
6307	7'	79 13/16"	4' 9"	23 7/16"	46 3/8"	18	11' 4"
6308	8'	91 3/8"	5' 8"	24 7/8"	52 5/16"	19	12' 3"

HEAVY DUTY
250
LB
TYPE 1



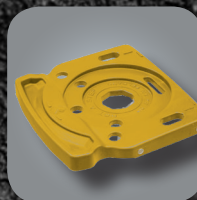
ASSEMBLED IN
ASSEMBLÉ AU
CANADA



Molded Top



Pail Shelf



Slip Resistant Shoe



MODEL	LADDER SIZE	OPEN HEIGHT	HIGHEST STANDING LEVEL	BASE WIDTH	BASE DEPTH	APPROX. WEIGHT LBS	MAX. REACH
5804	4'	47"	1' 11"	18 7/8"	28"	11	8' 6"
5805	5'	57"	2' 10"	20 1/2"	33 1/2"	13	9' 5"
5806	6'	68 1/2"	3' 10"	22"	39 3/4"	15	10' 5"
*5808	8'	91 1/2"	5' 8"	25"	52 1/4"	21	12' 3"

*5808 not available in the US

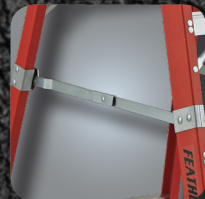
FIBERGLASS PLATFORM



Wide Platform



Wrap Around Rail



Heavy Duty Boot



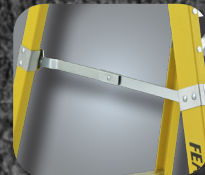
MODEL	LADDER SIZE	OPEN HEIGHT	HIGHEST STANDING LEVEL	BASE WIDTH	BASE DEPTH	APPROX. WEIGHT LBS	MAX. REACH
6504-AA	4'	44 9/16"	1' 11"	21 1/4"	30"	17	8' 6"
6505-AA	5'	56"	2' 10"	22 11/16"	36"	22	9' 5"
6506-AA	6'	67 7/16"	3' 10"	24 2/16"	42 5/8"	26	10' 5"
6507-AA	7'	78 13/16"	4' 9"	25 10/16"	49"	29	11' 4"
6508-AA	8'	78 13/16"	5' 8"	27 1/16"	55 3/8"	33	12' 3"
6510-AA	10'	90 1/4"	7' 7"	30"	68"	45	14' 2"
6512-AA	12'	113 3/16"	9' 6"	33 3/16"	80 6/8"	54	19' 2"



Top Rail Guard



Wrap Around Rail



Heavy Duty Boot



MODEL	LADDER SIZE	OPEN HEIGHT	HIGHEST STANDING LEVEL	BASE WIDTH	BASE DEPTH	APPROX. WEIGHT LBS	MAX. REACH
6504	4'	44 9/16"	1' 11"	21 1/4"	30"	17	8' 6"
6505	5'	56"	2' 10"	22 11/16"	36"	22	9' 3"
6506	6'	67 7/16"	3' 10"	24 1/8"	42 5/8"	26	10' 5"
6507	7'	78 13/16"	4' 9"	25 5/8"	49"	29	11' 4"
6508	8'	78 13/16"	5' 8"	27 1/16"	55 3/8"	33	12' 3"
6510	10'	90 1/4"	7' 7"	30"	68"	45	14' 2"
6512	12'	113 3/16"	9' 6"	33 3/16"	80 3/4"	54	16' 1"



FIBERGLASS PLATFORM EXTRA WIDE

70% larger platform
for increased comfort



Larger footprint for
increased stability



Large heavy duty boots
for slip-resistance



MODEL	LADDER SIZE	OPEN HEIGHT	HIGHEST STANDING LEVEL	BASE WIDTH	BASE DEPTH	APPROX. WEIGHT LBS	MAX. REACH
7504XW	4'	46"	23"	25"	36"	19	8' 6"
7505XW	5'	57"	34"	27"	42"	23	9' 5"
7506XW	6'	68"	46"	28"	48"	28	10' 4"
7508XW	8'	90"	68"	30"	59"	32	12' 3"

70% larger platform
for increased comfort



Larger footprint for
increased stability

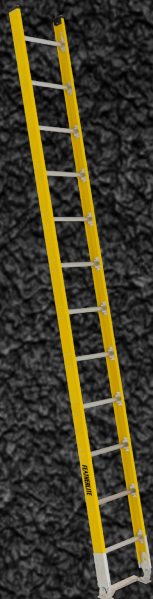


Large heavy duty boots
for slip-resistance



MODEL	LADDER SIZE	OPEN HEIGHT	PLATFORM HEIGHT	BASE WIDTH	BASE DEPTH	APPROX. WEIGHT LBS	MAX. REACH
6504XW	4'	46"	23"	25"	36"	18	8' 6"
6505XW	5'	57"	34"	27"	42"	22	9' 5"
6506XW	6'	68"	46"	28"	48"	27	10' 4"
6508XW	8'	90"	68"	30"	59"	31	12' 3"

FIBERGLASS STRAIGHT



**Non-Marring
End Caps**



**Riveted Rung
to Rail**



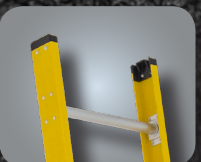
**1 Piece Foot
Assembly**



MODEL	LADDER SIZE	OUTSIDE WIDTH	INSIDE WIDTH	APPROX. WEIGHT (LBS)	MAX. REACH
6108	8'	17 7/16"	15 1/16"	19	11' 5"
6110	10'	17 7/16"	15 1/16"	23	13' 4"
6112	12'	17 7/16"	15 1/16"	26	15' 3"
6114	14'	17 7/16"	15 1/16"	30	17' 2"
6116	16'	17 7/16"	15 1/16"	34	19' 0"



**Non-Marring
End Caps**



**Riveted Rung
to Rail**



Heavy Duty Foot



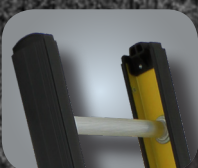
MODEL	LADDER SIZE	OUTSIDE WIDTH	INSIDE WIDTH	APPROX. WEIGHT (LBS)	MAX. REACH
5608	8'	17 7/16"	15 1/16"	18	11' 2"
5610	10'	17 7/16"	15 1/16"	21	13' 1"
5612	12'	17 7/16"	15 1/16"	25	15' 0"
5614	14'	17 7/16"	15 1/16"	29	16' 11"
5616	16'	17 7/16"	15 1/16"	33	18' 10"
5608D	8'	17 7/16"	15 1/16"	19	11' 2"
5610D	10'	17 7/16"	15 1/16"	22	13' 1"
5612D	12'	17 7/16"	15 1/16"	26	15' 0"
5614D	14'	17 7/16"	15 1/16"	30	16' 11"
5616D	16'	17 7/16"	15 1/16"	34	18' 10"



Narrow Inside width



Rail Protector



Slip Resistant Shoe



MODEL	LADDER SIZE	OUTSIDE WIDTH	INSIDE WIDTH	APPROX. WEIGHT (LBS)	MAX. REACH
5308	8'	12	9 5/8"	18	11' 4"
5310	10'	12	9 5/8"	22	13' 3"
5312	12'	12	9 5/8"	27	15' 2"
5314	14'	12	9 5/8"	29	17' 0"
5316*	16'	12	9 5/8"	34	18' 11"

Complies with ANSI / OSHA (CSA not applicable).

*5316 300LBS rated



FEATHERLITE 5

FIBERGLASS EXTENSION

Riveted Rung to Rail



Heavy Duty Foot



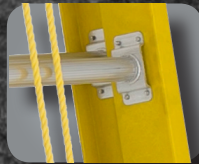
Raise From Rear



MODEL	LADDER SIZE	MAX. OPEN LENGTH	BASE SECTION		FLY SECTION		APPROX. WEIGHT LBS	MAX. REACH
			OUTSIDE WIDTH	INSIDE WIDTH	OUTSIDE WIDTH	INSIDE WIDTH		
9216D	16'	13"	17 7/16"	15 1/16"	16 7/16"	14 1/16"	39	15' 11"
9220D	20'	17"	17 7/16"	15 1/16"	16 7/16"	14 1/16"	46	19' 10"
9224D	24'	21"	17 7/16"	15 1/16"	16 7/16"	14 1/16"	54	23' 8"
9228D	28'	25"	17 7/16"	15 1/16"	16 7/16"	14 1/16"	62	27' 7"
9232D	32'	29"	17 7/16"	15 1/16"	16 7/16"	14 1/16"	70	31' 5"
*9236D	36'	32"	17 7/16"	15 1/16"	16 7/16"	14 1/16"	110	34' 4"
*9240D	40'	35"	17 7/16"	15 1/16"	16 7/16"	14 1/16"	117	37' 3"

*Grade 1A orange fiberglass

Riveted Rung to Rail



Raise from Front



1 Piece Foot Assembly



MODEL	LADDER SIZE	MAX. OPEN LENGTH	BASE SECTION		FLY SECTION		APPROX. WEIGHT LBS	MAX. REACH
			OUTSIDE WIDTH	INSIDE WIDTH	OUTSIDE WIDTH	INSIDE WIDTH		
6216	16'	13"	17 7/16"	15 1/16"	16 7/16"	14 1/16"	40	16' 2"
6220	20'	17"	17 7/16"	15 1/16"	16 7/16"	14 1/16"	47	20' 1"
6222	22'	19"	17 7/16"	15 1/16"	16 7/16"	14 1/16"	51	22' 0"
6224	24'	21"	17 7/16"	15 1/16"	16 7/16"	14 1/16"	55	23' 11"
6228	28'	25"	17 7/16"	15 1/16"	16 7/16"	14 1/16"	62	27' 10"
6232	32'	29"	17 7/16"	15 1/16"	16 7/16"	14 1/16"	69	31' 8"
6216D	16'	13"	17 7/16"	15 1/16"	16 7/16"	14 1/16"	41	16' 2"
6220D	20'	17"	17 7/16"	15 1/16"	16 7/16"	14 1/16"	49	20' 1"
6222D	22'	19"	17 7/16"	15 1/16"	16 7/16"	14 1/16"	53	22' 0"
6224D	24'	21"	17 7/16"	15 1/16"	16 7/16"	14 1/16"	57	23' 11"
6228D	28'	25"	17 7/16"	15 1/16"	16 7/16"	14 1/16"	64	27' 10"
6232D	32'	29"	17 7/16"	15 1/16"	16 7/16"	14 1/16"	72	31' 8"

Riveted Rung to Rail



Center Pulley
Raise from Front



Heavy Duty Foot



MODEL	LADDER SIZE	MAX. OPEN LENGTH	BASE SECTION		FLY SECTION		APPROX. WEIGHT LBS	MAX. REACH
			OUTSIDE WIDTH	INSIDE WIDTH	OUTSIDE WIDTH	INSIDE WIDTH		
5716	16'	13"	17 7/16"	15 1/16"	16 7/16"	14 1/16"	39	15' 11"
5720	20'	17"	17 7/16"	15 1/16"	16 7/16"	14 1/16"	46	19' 10"
5724	24'	21"	17 7/16"	15 1/16"	16 7/16"	14 1/16"	53	23' 8"
5728	28'	25"	17 7/16"	15 1/16"	16 7/16"	14 1/16"	61	27' 7"
5732	32'	29"	17 7/16"	15 1/16"	16 7/16"	14 1/16"	68	31' 5"
5716D	16'	13"	17 7/16"	15 1/16"	16 7/16"	14 1/16"	40	15' 11"
5720D	20'	17"	17 7/16"	15 1/16"	16 7/16"	14 1/16"	48	19' 10"
5724D	24'	21"	17 7/16"	15 1/16"	16 7/16"	14 1/16"	55	23' 8"
5728D	28'	25"	17 7/16"	15 1/16"	16 7/16"	14 1/16"	63	27' 7"
5732D	32'	29"	17 7/16"	15 1/16"	16 7/16"	14 1/16"	71	31' 5"





MAX LOCK™

THE
**STRONGEST,
TOUGHEST,
LIGHTEST
RUNG LOCK
EVER.**



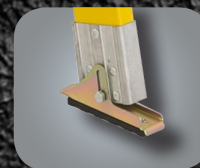
D Rung



Max Lock



Swivel Foot



MODEL	LADDER SIZE	MAX. OPEN LENGTH	BASE SECTION		FLY SECTION		APPROX. WEIGHT LBS	MAX. REACH
			OUTSIDE WIDTH	INSIDE WIDTH	OUTSIDE WIDTH	INSIDE WIDTH		
6916	16'	13"	17 7/16"	14 11/16"	16 1/16"	13 11/16"	31	15' 11"
6920	20'	17"	17 7/16"	14 11/16"	16 1/16"	13 11/16"	42	19' 10"
6924	24'	21"	17 7/16"	14 11/16"	16 1/16"	13 11/16"	51	23' 8"
6928	28'	25"	17 7/16"	14 11/16"	16 1/16"	13 11/16"	60	27' 7"
6932	32'	29"	17 7/16"	14 11/16"	16 1/16"	13 11/16"	67	31' 5"



**Rung Through
Rail**



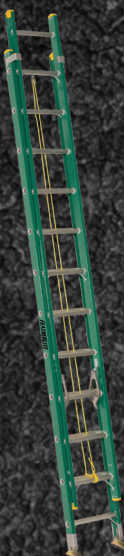
Rung Lock



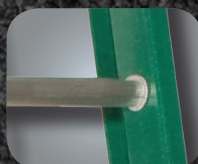
Swivel Foot



MODEL	LADDER SIZE	MAX. OPEN LENGTH	BASE SECTION		FLY SECTION		APPROX. WEIGHT LBS	MAX. REACH
			OUTSIDE WIDTH	INSIDE WIDTH	OUTSIDE WIDTH	INSIDE WIDTH		
6316	16'	13"	17 1/16"	14 11/16"	16 1/16"	13 11/16"	31	15' 11"
6320	20'	17"	17 1/16"	14 11/16"	16 1/16"	13 11/16"	42	19' 10"
6324	24'	21"	17 1/16"	14 11/16"	16 1/16"	13 11/16"	51	23' 8"



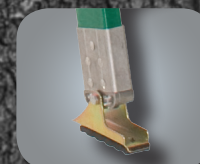
**Rung Through
Rail**



Rung Lock



Swivel Foot



MODEL	LADDER SIZE	MAX. OPEN LENGTH	BASE SECTION		FLY SECTION		APPROX. WEIGHT LBS	MAX. REACH
			OUTSIDE WIDTH	INSIDE WIDTH	OUTSIDE WIDTH	INSIDE WIDTH		
5816	16'	13"	17 1/16"	14 11/16"	16 1/16"	13 11/16"	31	15' 11"
5820	20'	17"	17 1/16"	14 11/16"	16 1/16"	13 11/16"	42	19' 10"
5824	24'	21"	17 1/16"	14 11/16"	16 1/16"	13 11/16"	51	23' 8"
5828	28'	25"	17 1/16"	14 11/16"	16 1/16"	13 11/16"	60	27' 7"



ALUMINUM STEP

ProTop™



Pail Shelf



Heavy Duty Boot



AVAILABLE IN USA

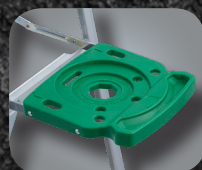
MODEL	LADDER SIZE	OPEN HEIGHT	HIGHEST STANDING LEVEL	BASE WIDTH	BASE DEPTH	APPROX. WEIGHT LBS	MAX. REACH
*3402	2'	22 13/16"	22 13/16"	16 7/16"	17 1/4"	5	8' 5"
*3403	3'	30 3/4"	30 3/4"	17 1/4"	22"	7	9' 1"
3404	4'	45 5/8"	22 13/16"	18 1/2"	30"	11	8' 6"
3405	5'	57 1/16"	34 1/4"	20 1/16"	36 9/16"	14	9' 5"
3406	6'	68 1/2"	45 5/8"	21 9/16"	42 3/4"	16	10' 5"
3407	7'	79 7/8"	57 1/16"	23 1/16"	49 1/8"	18	11' 4"
3408	8'	91 5/16"	68 1/2"	24 9/16"	55 1/2"	21	12' 3"
3410	10'	114 1/8"	91 5/16"	27 9/16"	68 1/4"	27	14' 2"
3412	12'	136 15/16"	114 1/8"	31 7/8"	77 3/4"	38	16' 1"
3414	14'	159 3/4"	136 15/16"	34 1/2"	93 3/4"	60	18'
3416	16'	182 5/8"	159 3/4"	37 5/8"	102 1/4"	70	19' 11"

*3402 and 3403 are step stools

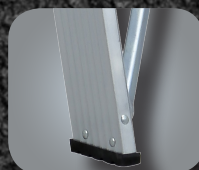
Top with Tool Slots



Pail Shelf



Slip Resistant Shoe



AVAILABLE IN USA

MODEL	LADDER SIZE	OPEN HEIGHT	HIGHEST STANDING LEVEL	BASE WIDTH	BASE DEPTH	APPROX. WEIGHT LBS	MAX. REACH
2404	4'	45 5/8"	23"	17 3/4"	27 1/5"	8	8' 6"
2405	5'	56 3/4"	34"	19 1/8"	33 7/8"	10	9' 5"
2406	6'	68"	46"	20 3/4"	41 1/8"	11	10' 5"
2407	7'	79 7/8"	57"	22 1/16"	44 5/8"	13	11' 4"
2408	8'	91 5/16"	68"	23 5/16"	5 5/8"	14	12' 3"
2410	10'	114 1/8"	91"	26 1/16"	64 1/4"	18	14' 2"

Special Access

DUAL ACCESS LADDER

Aluminum Top



Slip Resistant Shoe



AVAILABLE IN USA

MODEL	LADDER SIZE	OPEN HEIGHT	HIGHEST STANDING LEVEL	BASE WIDTH	BASE DEPTH	APPROX. WEIGHT LBS	MAX. REACH
3604	4'	45 1/4"	1' 11"	21 1/4"	37 7/8"	41	8' 6"
3606	6'	56 5/8"	3' 10"	24 1/4"	45 1/4"	59	10' 5"
3608	8'	90 7/8"	5' 8"	27 1/4"	67 1/2"	79	12' 3"
3610	10'	113 3/4"	7' 7"	30 1/4"	82 3/8"	98	14' 2"

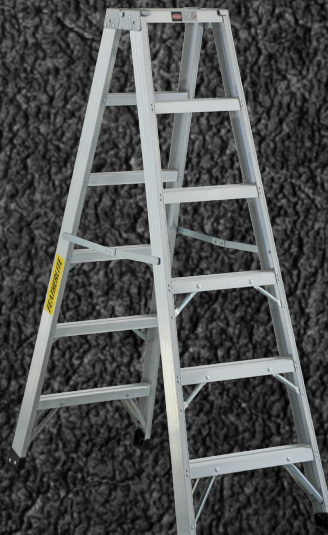
EXTRA HEAVY DUTY
300
LB
TYPE 1A



MEDIUM DUTY
225
LB
TYPE 2



EXTRA HEAVY DUTY
300
LB
TYPE 1A



ASSEMBLED IN
ASSEMBLÉ AU
CANADA

ALUMINUM PLATFORM EXTRA WIDE



Top Rail Guard



Platform



Slip Resistant Shoe



MODEL	LADDER SIZE	OPEN HEIGHT	HIGHEST STANDING LEVEL	BASE WIDTH	BASE DEPTH	APPROX. WEIGHT LBS	MAX. REACH
3504	4'	44 9/16"	1' 11"	21 1/4"	30"	15	8' 6"
3505	5'	56"	2' 10"	22 11/16"	36"	19	9' 3"
3506	6'	67 7/16"	3' 10"	24 1/8"	42 5/8"	22	10' 5"
3508	8'	78 13/16"	5' 8"	27 1/16"	55 3/8"	29	12' 3"
3510	10'	90 1/4"	7' 7"	30"	68"	36	14' 2"
3512	12'	136 7/8"	9' 6"	33 6/16"	89 1/8"	46	16' 1"
3514	14'	160 1/8"	11' 5"	36 1/4"	101"	64	18' 0"
3516	16'	182 7/8"	13' 4"	39 1/16"	112 7/8"	75	19' 11"



70% larger platform for increased comfort

Larger footprint for increased stability

Large heavy duty boots for slip-resistance



MODEL	LADDER SIZE	OPEN HEIGHT	PLATFORM HEIGHT	BASE WIDTH	BASE DEPTH	APPROX. WEIGHT LBS	MAX. REACH
3504XW	4'	46"	23"	25"	35"	16	8' 6"
3505XW	5'	56"	34"	27"	39"	20	9' 5"
3506XW	6'	68"	46"	28"	48"	24	10' 4"
3508XW	8'	90"	68"	30"	53"	29	12' 3"

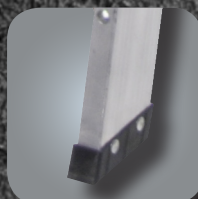
SAWHORSE



Wide Design



Slip Resistant Shoe



Combine Sizes to Create a Plank



MODEL	LADDER SIZE	OPEN HEIGHT	BASE WIDTH	BASE DEPTH	APPROX. WEIGHT LBS	MAX. REACH
3702	2'	22 4/16"	31 15/16"	23 8/16"	10	N/A
3703	3'	33 8/16"	33 5/16"	31 8/16"	14	N/A
3704	4'	44 12/16"	34 11/16"	39 8/16"	19	N/A

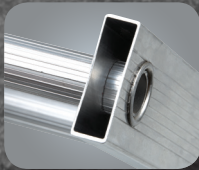
*Intended for planking applications



FEATHERLITE 9

ALUMINUM STRAIGHT

Box Section Design



Aluminum Round Rung



Swivel Shoe



MODEL	LADDER SIZE	OUTSIDE WIDTH	INSIDE WIDTH	APPROX. WEIGHT (LBS)	MAX. REACH
4108	8'	13 3/4"	12 1/8"	13	11' 2"
4110	10'	13 3/4"	12 1/8"	15	13' 1"
4112	12'	13 3/4"	12 1/8"	19	15' 0"
4114	14'	13 3/4"	12 1/8"	22	16' 11"
4116	16'	14 1/8"	13 3/8"	25	18' 10"
4118	18'	14 1/8"	13 3/8"	28	20' 8"
4120	20'	14 1/8"	13 3/8"	31	22' 7"
4122	22'	14 1/8"	13 3/8"	41	24' 6"
4124	24'	14 1/8"	13 3/8"	44	26' 5"

Aluminum D Rung



Non-Marring End Cap



Slip Resistant Shoe



MODEL	LADDER SIZE	OUTSIDE WIDTH	INSIDE WIDTH	APPROX. WEIGHT (LBS)	MAX. REACH
3108D	8'	16 1/8"	15 3/16"	14	11' 2"
3110D	10'	16 1/8"	15 3/16"	17	13' 1"
3112D	12'	16 1/8"	15 3/16"	20	15' 0"
3114D	14'	16 1/8"	15 3/16"	26	16' 11"
3116D	16'	17 1/8"	16 3/16"	30	18' 10"
3118D	18'	17 1/8"	16 3/16"	37	20' 8"
3120D	20'	17 1/8"	16 3/16"	41	22' 7"

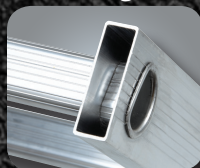


ALUMINUM EXTENSION

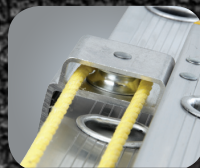
EXTRA HEAVY DUTY
300
LB
TYPE 1A



Box Section Design



Side Mounted Pulley



D Rung



MODEL	LADDER SIZE	MAX. OPEN LENGTH	BASE SECTION		FLY SECTION		APPROX. WEIGHT LBS	MAX. REACH
			OUTSIDE WIDTH	INSIDE WIDTH	OUTSIDE WIDTH	INSIDE WIDTH		
4216D	16'	13"	16 ¹⁵ / ₁₆ "	15 ³ / ₁₆ "	14 ⁵ / ₈ "	12 ⁷ / ₈ "	32	15' 11"
4220D	20'	17"	16 ¹⁵ / ₁₆ "	15 ³ / ₁₆ "	14 ⁵ / ₈ "	12 ⁷ / ₈ "	37	19' 10"
4224D	24'	21"	16 ¹⁵ / ₁₆ "	15 ³ / ₁₆ "	14 ⁵ / ₈ "	12 ⁷ / ₈ "	44	23' 8"
4228D	28'	25"	16 ¹⁵ / ₁₆ "	15 ³ / ₁₆ "	14 ⁵ / ₈ "	12 ⁷ / ₈ "	52	27' 7"
4232D	32'	29"	18 ⁶ / ₁₆ "	16 ⁶ / ₁₆ "	15 ⁷ / ₈ "	13 ⁷ / ₈ "	64	31' 5"
4236D	36'	32"	18 ⁶ / ₁₆ "	16 ⁶ / ₁₆ "	15 ⁷ / ₈ "	13 ⁷ / ₈ "	70	34' 4"
4240D	40'	35"	18 ⁶ / ₁₆ "	16 ⁶ / ₁₆ "	15 ⁷ / ₈ "	13 ⁷ / ₈ "	82	37' 4"
4244D	44'	39"	18 ⁶ / ₁₆ "	16 ⁶ / ₁₆ "	15 ⁷ / ₈ "	13 ⁷ / ₈ "	90	40' 2"

EXTRA HEAVY DUTY
300
LB
TYPE 1A



D Rung



Max Lock



Swivel Safety Shoe



MODEL	LADDER SIZE	MAX. OPEN LENGTH	BASE SECTION		FLY SECTION		APPROX. WEIGHT LBS	MAX. REACH
			OUTSIDE WIDTH	INSIDE WIDTH	OUTSIDE WIDTH	INSIDE WIDTH		
3216D	16'	13	17 ¹³ / ₁₆ "	15 ⁹ / ₁₆ "	15 ³ / ₈ "	13 ¹ / ₈ "	29	15' 11"
3220D	20'	17	17 ¹³ / ₁₆ "	15 ⁹ / ₁₆ "	15 ³ / ₈ "	13 ¹ / ₈ "	35	19' 10"
3224D	24'	21	17 ¹³ / ₁₆ "	15 ⁹ / ₁₆ "	15 ³ / ₈ "	13 ¹ / ₈ "	41	23' 8"
3228D	28'	25	18 ¹ / ₈ "	15 ⁷ / ₈ "	15 ¹¹ / ₁₆ "	13 ⁷ / ₁₆ "	53	27' 7"
3232D	32'	29	18 ¹ / ₈ "	15 ⁷ / ₈ "	15 ¹¹ / ₁₆ "	13 ⁷ / ₁₆ "	60	31' 5"
3236D	36'	32	18 ¹ / ₈ "	15 ⁷ / ₈ "	15 ¹¹ / ₁₆ "	13 ⁷ / ₁₆ "	74	34' 4"
3240D	40'	35	18 ¹ / ₈ "	15 ⁷ / ₈ "	15 ¹¹ / ₁₆ "	13 ⁷ / ₁₆ "	82	37' 4"

MAX LOCK™

THE
**STRONGEST,
TOUGHEST,
LIGHTEST
RUNG LOCK
EVER.**

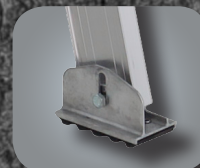
Aluminum Pulley



Rung Lock

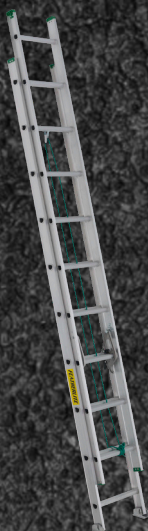


Slip Resistant Shoe



MODEL	LADDER SIZE	MAX. OPEN LENGTH	BASE SECTION		FLY SECTION		APPROX. WEIGHT LBS	MAX. REACH
			OUTSIDE WIDTH	INSIDE WIDTH	OUTSIDE WIDTH	INSIDE WIDTH		
2216	16'	13	16 ⁶ / ₁₆ "	14 ⁶ / ₁₆ "	15 ⁵ / ₁₆ "	13 ⁵ / ₁₆ "	21	15' 11"
2220	20'	17	16 ⁶ / ₁₆ "	14 ⁶ / ₁₆ "	15 ⁵ / ₁₆ "	13 ⁵ / ₁₆ "	27	19' 10"
2224	24'	21	16 ⁶ / ₁₆ "	14 ⁶ / ₁₆ "	15 ⁵ / ₁₆ "	13 ⁵ / ₁₆ "	33	23' 8"
2228	28'	25	16 ⁶ / ₁₆ "	14 ⁶ / ₁₆ "	15 ⁵ / ₁₆ "	13 ⁵ / ₁₆ "	41	27' 7"
2232	32'	29	17 ¹ / ₈ "	15 ¹ / ₈ "	16 ³ / ₁₆ "	14 ⁵ / ₁₆ "	48	31' 5"
2236	36'	32	17 ¹ / ₈ "	15 ¹ / ₈ "	16 ³ / ₁₆ "	14 ⁵ / ₁₆ "	68	34' 4"
2240	40'	35	17 ¹ / ₈ "	15 ¹ / ₈ "	16 ³ / ₁₆ "	14 ⁵ / ₁₆ "	78	37' 4"

MEDIUM DUTY
225
LB
TYPE 2



SPECIALTY

Mechanical Interlocking Tooth Hinges



Flaired Slip-resistant Feet



Deep Side Rails



MODEL	FOLDED HEIGHT	EXTENSION RANGE	WORKING HEIGHT	SCAFFOLD	APPROX. WEIGHT LBS
JLT 18	4'9"	9'0" to 15'0"	9'0" to 18'0"	Up to 4'	36
JLT 22	5'9"	11'0" to 19'0"	11'0" to 22'0"	Up to 5'	41
JLT 26	6'9"	13'0" to 23'0"	13'0" to 26'0"	Up to 6'	50

EXTRA HEAVY DUTY
300
LB
TYPE 1A



3 in 1 Step



Stairway



Extension



HEAVY DUTY
250
LB
TYPE 1



MODEL	STEP SIZE	EXTENSION SIZE	MAX. EXTENSION OPEN LENGTH	APPROX. WEIGHT (LBS)	MAX. REACH
2706	6'	12'	9'	22	N/A
2707	7'	14'	11'	25	N/A
2708	8'	16'	13'	27	N/A





CROSSXSTEP |



Top

Lock

Shox/Boot



MODEL	LADDER SIZE	BOTTOM WIDTH (IN)	APPROX. SPREAD (IN)	APPROX. WEIGHT (LBS)	APPROX. CUBES (FT)	SHEFLADDER		STEPLADDER	
						HIGHEST STANDING LEVEL (IN)	MAX. REACH	HIGHEST STANDING LEVEL (IN)	MAX. REACH
FXS6904	4'	20 1/4"	24	15	4	11"	7' 6"	1' 11"	8' 6"
FXS6906	6'	23 1/4"	36	21	6.8	2' 10"	9' 5"	3' 9"	10' 4"
FXS6908	8'	26 1/4"	48	28	10.1	4' 9"	11' 4"	5' 8"	12' 3"
FXS6910	10'	29 1/4"	60	39	14	6' 8"	13' 3"	7' 7"	14' 2"
FXS6912	12'	32 3/8"	71	48	18.5	8' 6"	15' 1"	9' 6"	16' 1"



ACCESSORIES EXTENSION LADDERS

POLE STRAP FLY

Holds top of ladder against poles, pipes or corners.

FACTORY
F01

PART # 99061

POLE STRAP BASE

Holds top of ladder against poles, pipes or corners.

FACTORY
F02

PART # PK1171

MESSENGER HOOK

Safety catch for ladders on wire or cable strands

FACTORY
F04

PART # 99063

NON SLIP STRIP

Additional non-slip resistance for any project.

FACTORY
F05

PART # 99322

SHOULDER PAD

Added comfort for ladder transportation.

FACTORY
F06

PART # 99321

BASE V RUNG

Allows ladder to lean into poles, pipes and corners.

FACTORY
F07

PART # 99130-B

FLY V RUNG

Allows ladder to lean into poles, pipes and corners.

FACTORY
F08

PART # 99130-F

GLOVES

Protects ladder rail and work surface from marring.

FACTORY
F11

PART # 99129

LEVELOK™

Keeps ladder level on any surface.

FACTORY
F13

PART # 21145

	5700	5700D	6200	6200D	9200D	5600 SINGLE	5600D SINGLE	6100 SINGLE
ACCESSORY #F01 POLE STRAP FLY								
ACCESSORY #F02 POLE STRAP BASE								
ACCESSORY #F04 MESSENGER HOOK								
ACCESSORY #F05 NON SLIP								
ACCESSORY #F06 SHOULDER PAD								
ACCESSORY #F07 BASE V RUNG RIDGID								
ACCESSORY #F08 FLY V RUNG SKINNY								
ACCESSORY #F11 GLOVES								
ACCESSORY #F13 LEVELOK™								

To order factory-mount accessories, add the 3-digit accessory number and size. EXAMPLE: 6220-F01, 20' Fiberglass Extension Ladder with Pole Strap Fly.

WAREHOUSE LOCATIONS



FEATHERLITE

CANADIAN HEAD OFFICE

100 ENGLHARD DRIVE
AURORA, ON, L4G 3V2

PHONE 905.727.0031
TOLL FREE 800-867-5233
FAX 905-727-7271

CANADA

› ONTARIO

402 Mulock Drive, Unit #2
Newmarket, ON, L3Y 9B8
PHONE: (647) 484-0425

› QUEBEC

2001 Francis Hughes
Laval, QC H7S 2G2
PHONE: (450) 668-4610
FAX: (450) 668-4611

› BRITISH COLUMBIA

7205 Brown Street
Delta, BC V4G 1G5
PHONE: (604) 940-2972
FAX: (604) 940-2973

USA

BENSALEM, PA

855 Dunks Ferry Road
Bensalem, PA 19020
PHONE: (215) 638-8904

CLOVER, SC

1201 OLD NORTH MAIN STREET
Clover, SC, 29710
phone: (803) 222-3562
fax: (803) 222-1338

DENVER, CO

11551 East 45th Ave. Unit B
Denver, CO 80239
phone: (720) 445-1660

GRAND PRAIRIE, TX

801 Heinz Way
Grand Prairie, TX 75051
phone: (972) 602-4400

HAYWARD, CA

2192 West Winton Ave.
Hayward, CA 94545
phone: (510) 750-2651

HONOLULU, HI

701 Puuloa Road,
Honolulu, HI, 96819
phone: (808) 839-9061

HOUSTON, TX

13028 Garrett Rd.
Houston, TX 77044
phone: (713) 673-4000
fax: (713) 673-4242

LAREDO, TX

8705 Killam Industrial Blvd.
Laredo, Tx, 78045
phone: (956) 523-6518

PEORIA, IL

7921 North Hale Ave.
Peoria, IL 61615
phone: (309) 692-1895

RANCHO CUCAMONGA, CA

10013 East 8th Street, Suite R
Rancho Cucamonga, CA 91730
phone: (909) 941-0623

SALT LAKE CITY, UT

760 West Layton Ave.
Salt Lake City, UT 84104
phone: (801) 854-8949

SEATTLE, WA

920 S. Doris Street
Seattle, WA 98108
phone: (206) 762-4888
fax: (206) 767-4386

TUCKER, GA

2689A Mountain Industrial Blvd.
Tucker, GA 30084
phone: (770) 491-1515

VALDOSTA, GA

1617 James P. Rodgers Drive
Valdosta, GA 31601
phone: (229) 245-0669

VANCOUVER, WA

7509 North East 47th Ave.
Vancouver, WA 98661
phone: (206) 762-4888
fax: (206) 767-4386



FEATHERLITE